

6000TOCi with ISM



THORNTON
Leading Pure Water Analytics

6000TOCi Sensor

True Continuous Measurement

Stable and Reliable Analysis

Verifiable System Performance

Supports Regulatory Compliance



Audit-Ready TOC Compliance
For Pharmaceutical Water Systems

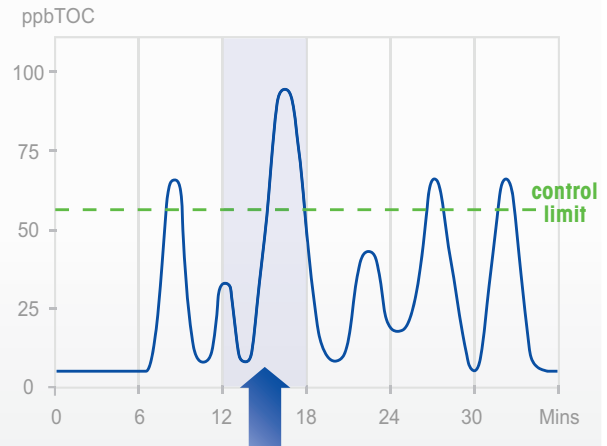
METTLER TOLEDO

Continuous, Real-time Measurement For Full Visibility of TOC Excursions

Continuous monitoring provides a real-time data advantage over batch or non-continuous methods of total organic carbon (TOC) measurement. Unlike at-line batch analyzers that measure at set intervals, the 6000TOCi Sensor offers true continuous measurement that refreshes every second so you never miss an increase in TOC levels.



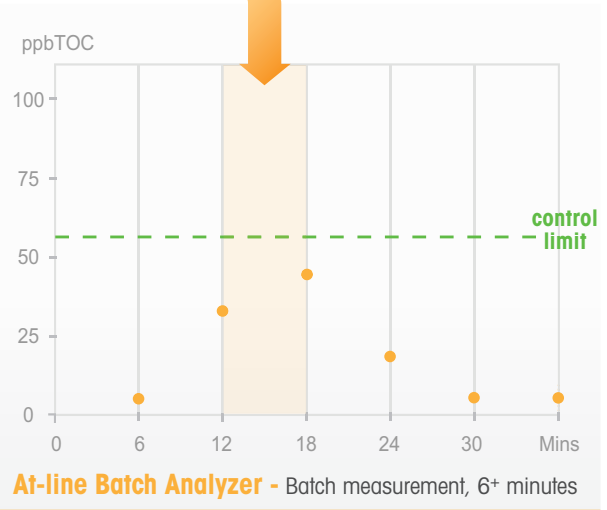
6000TOCi Sensor - Continuous, real-time measurement



What can happen in 6 minutes?

A lot if data is limited to the snapshots of information provided by an at-line batch analyzer. The 6000TOCi provides real-time data so you know exactly when an excursion starts and ends. This helps demonstrate compliance and ensures audit readiness.

VS.





Complete TOC analysis supports quick decision making



The 6000TOCi system provides clear analysis including TOC trends for Peak, Average and Rate-of-Change to analyze water quality and facilitate quick and effective decision making.

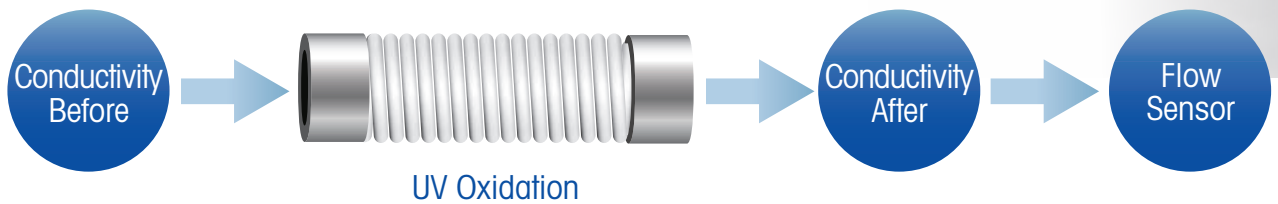
Fastest TOC response available reduces risk of contamination



With an initial response rate of less than a minute and measurement updates every second, the 6000TOCi is ideal in all pure water applications where rapid detection of TOC changes is critical.

Stable and Reliable Analysis For Maximum Performance

The 6000TOCi Sensor employs proven UV oxidation technology to provide consistent and accurate total organic carbon analysis. With highly stable and reproducible TOC measurements, you can be confident that you have the control over your water system that is required to meet regulatory and internal water quality specifications.



Simpler and more robust design maximizes uptime

Simple sensor-style design provides a rugged and reliable solution that requires less maintenance and is more resistant to failure than complicated at-line batch analyzers.



Technology enhancements deliver reliable and repeatable measurements



The 6000TOCi uses proven UV oxidation technology and the highest accuracy conductivity sensors to provide stable and precise organics determination for improved water system control.

Verifiable sensor performance with advanced diagnostics



Intelligent Sensor Management (ISM[®]) advanced diagnostics help ensure your sensor performs optimally at all times. The Dynamic Lifetime Indicator (DLI) tool monitors remaining UV lamp life so you can plan maintenance before problems occur.

Data Assurance Delivers Confidence and Compliance

For more than 50 years, our measurement solutions have been recognized globally for their innovation, reliability and convenience. We lead and participate in water standards development within regulatory and industry committees, such as USP, EP, JP, ChP, IP, ISPE and PDA to ensure that regulations and standards are met and support process analytical technology initiatives. Our multi-parameter instruments and advanced sensors provide smart analytics for water systems worldwide.

Meet regulatory and internal water quality requirements



For regulated industries, the 6000TOCi Sensor and M800 Transmitter provide a fully compliant solution. They satisfy the requirements of all major global pharmacopeias for TOC instrumentation, including USP, EP, JP, ChP and IP.

Clear TOC history to support validation and audits



The 6000TOCi Sensor automatically records any excursions, calibrations and system suitability test results. USB ports provide printer output and data logging, which ensures you have a clearly recorded history from the TOC sensor, supporting audits and validation.



MT Service



Professional Services for 3rd Party Validation

Third party validation to ensure your instrumentation is always measuring effectively and efficiently.

- ✔ Basic Preventative Maintenance
- ✔ Full Preventative Maintenance with Calibration
- ✔ System Suitability Test (SST)

► www.mt.com/service

6000TOCi Sensor

Ordering Information

| Sensor | Order no. |
|--|------------------|
| 6000TOCi Sensor, 110/240 VAC 50/60 Hz | 30 472 150 |
| 6000TOCi Sensor, low ppb calibration, 110/240 VAC 50/60 Hz | 30 472 151 |

| Transmitter | Order no. |
|----------------------|------------------|
| M800 Water 2-channel | 58 000 802 |
| M800 Water 4-channel | 58 000 804 |
| M800 DP 2-channel | 58 000 806 |

| Accessories | Order no. |
|--------------------------------|------------------|
| Pump module, 6000TOCi | 30 472 152 |
| Filter assembly, high capacity | 58 091 550 |
| High pressure regulator | 58 091 552 |

| Consumables & Spare Parts | Order no. |
|---|------------------|
| Replacement UV lamp | 58 079 513 |
| Calibration standards | 30 472 083 |
| System suitability test standards | 30 472 084 |
| Combined calibration and system suitability test standards | 30 472 085 |
| Calibration standards for extended range calibration | 30 472 086 |
| Combined calibration and system suitability test standards for extended range calibration | 30 472 087 |
| Fuse, 1.25A, sensor PCB | 58 091 519 |
| Filter element, high capacity | 58 091 551 |

www.mt.com/thornton

Visit for more information

METTLER TOLEDO Group
Process Analytics Division
Local contact: www.mt.com/pro-MOs

Subject to technical changes
©12/2018 METTLER TOLEDO. All rights reserved
ISM is a registered trademark of the METTLER TOLEDO Group.
58 087 131 Rev B 12/18



Quality certificate.
Development, production and testing to ISO 9001.



CE Compliant



UL listed
Meets Canadian Standards